

Subject: **Detainable Deficiency (Emergency Generator Starting)**

1. Deficiency

Deficiency:

Case 1) EMDG not possible to start with 2nd means of starting device(hydraulic)

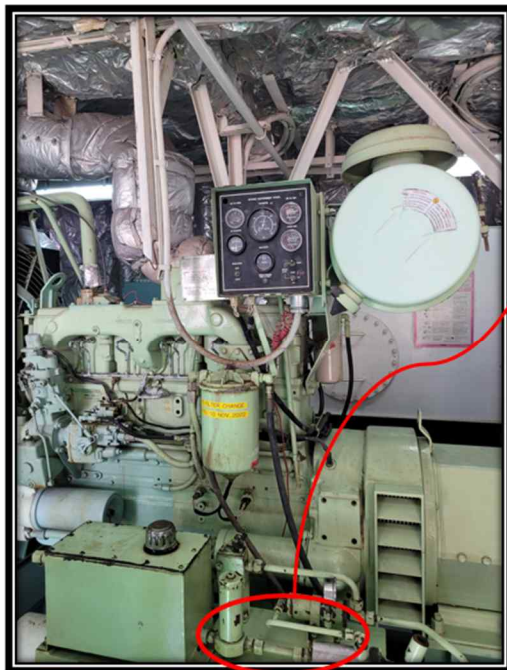
Case 2) The reserved power of emergency generator is not enough and only once starting completed.

<Relevant requirements>

Reg. 44.2 / Ch.Ⅱ-1 of SOLAS

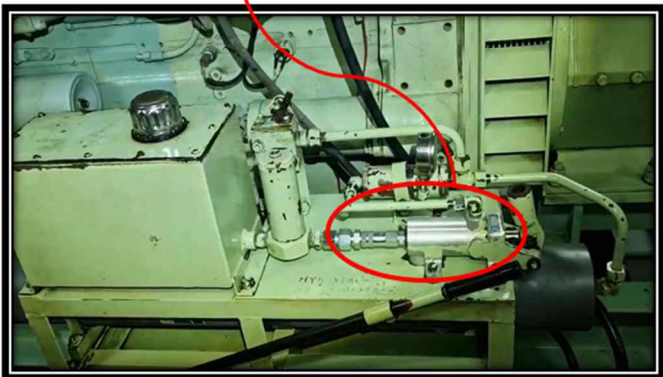
A **second source energy shall be provided** for an additional three starts within 30 min unless manual starting can be demonstrated to be effective.

2. Related Photo (example)



[Deficiency]
Due to hydraulic oil leakage,
EMDG not possibly started by 2nd means

[Rectification]
Hydraulic manual pump replaced.



3. Other starting system as 2nd means (example)

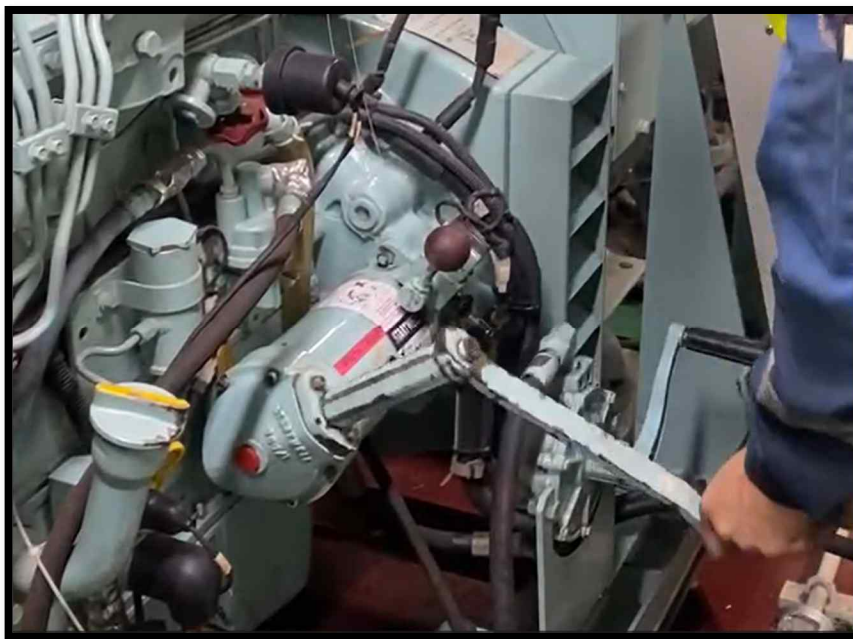
< Air type >



< Hydraulic type >



< Spring type >



3. Conclusion

- Please be reminded that emergency generator starting test with 2nd means of starting device should be carried out periodically according to established Company's PMS in a bid to prevent the detention.

P.I.C:
BAEK Junwoo / Principal Surveyor
Survey Team
Tel: +82 70 8799 8215
E-mail: psc@krs.co.kr

**General Manager of Survey Team
Korean Register**

Disclaimer

Although all possible efforts have been made to ensure correctness and completeness of the contents contained in this information service, the Korean Register of Shipping is not responsible for any errors or omissions made herein, nor held liable for any actions taken by any party as a result of information retrieved from this information service.