

SeaTrust-CarLashing



PROVIDING THE BEST SERVICES, CREATING A BETTER WORLD

SeaTrust-CarLashing



KR ICT Solution Team

(46762) 36, Myeongji Ocean City 9-ro, Gangseo-gu, Busan, Republic of Korea
Tel : +82-70-8799-8585 | Fax : +82-70-8799-8569 | Email : convertech@krs.co.kr

Copyright © 2021 ALL RIGHTS RESERVED BY KOREAN REGISTER



KR Software

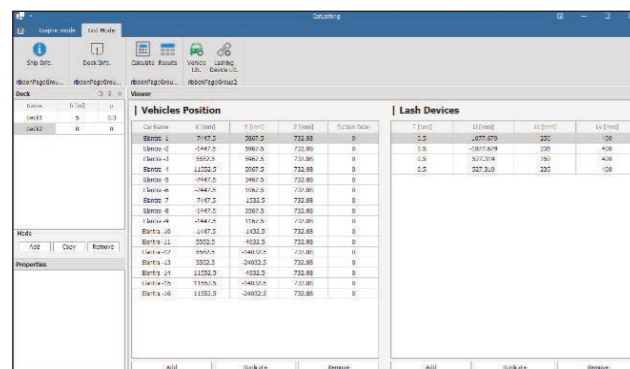
SeaTrust-CarLashing

SeaTrust-CarLashing

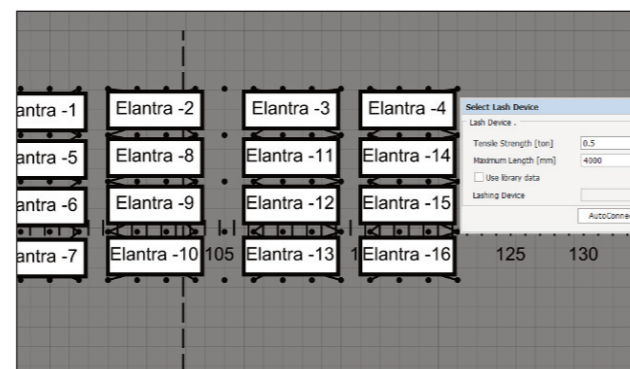
When you plan to load vehicles onto a car ferry subject to Korean Ship Safety Act with restricted domestic service, you should create a vehicle loading plan with annex 7-3 of the Korean Register (KR). However, it reduces productivity because it requires arranging vehicles and securing devices that involves determining the position of vehicles, as well as the breaking load and the critical point of securing devices. Moreover, calculating the safety of each vehicle on multiple vehicle decks is a time-consuming task.

SeaTrust-CarLashing is here to assist you with those time-consuming tasks. By inputting a few parameters, SeaTrust-CarLashing allows you to confirm that your loading plan complies with regulations while also providing various safety features.

SeaTrust-CarLashing provides two types of data creation modes. First, you can create a loading layout by dragging or copying the vehicles' positions and securing devices. Second, you can insert the position of the vehicles and the length of the lash devices in the table if you need the data instantly. They are automatically converted and can be used in various ways.



Vehicle Loading Plan Creation

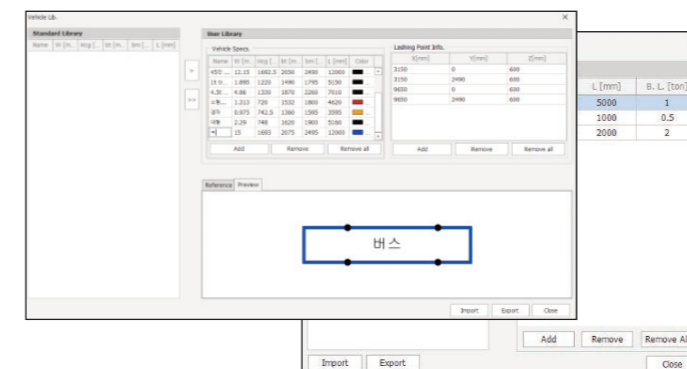


Auto Lash Creation

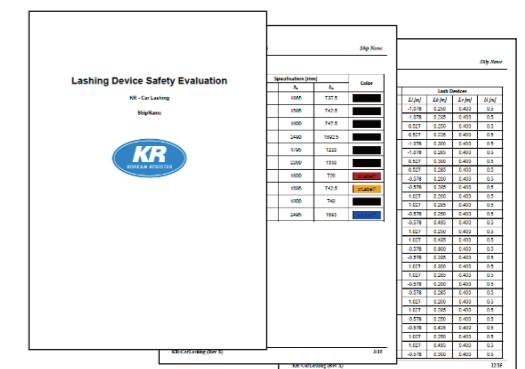
Benefits

KEY FEATURES

- Helps users create a vehicle loading plan with a 2D graphic-based user interface (UI)
- Provides a table-based input mode for creating a loading plan
- Creates several vehicle decks or duplicates them for reuse
- Provides predefined data libraries for commercial vehicles and securing devices
- Connects vehicles and fixes securing devices automatically
- Generates a report for review



Pre-defined data sets



Report Creation